

# ELEGANT HOMES™

*Beautiful*  
Homes  
Designed for  
Luxury

Fall/Winter 2008  
Display until October 28



**Meredith**Specials

Casual, cottage styling and a stunning view of the harbor make every day spent at this home in Sullivan's Island, South Carolina, feel like a vacation in paradise.

# *Seaside* Serenity

PRODUCED BY SANDRA L. MOHLMANN PHOTOGRAPHY BY TRIA GIOVAN



THIS PHOTO: Although dominated by neutrals, the living room got a punch of color with what the Van Scoys laughingly call the "Low Country critter rug."







LEFT: Befitting the beach cottage atmosphere, the Van Scoys decided to forgo a formal dining room. Years ago, the couple found the harvest-style table, made from a combination of new, sturdy pine legs and an antique heart-pine top. RIGHT: A curving drive leads guests to the parking court near the front door. The wing to the right houses office space and the garages.



On a clear day, Pam and Doug Van Scoy can sit anywhere on the west side of their home and take in a sweeping view of Charleston Harbor. It was this tranquil scene, as well as the charm of Sullivan's Island, South Carolina, that inspired the couple to retire there after 20 years in Atlanta. "It's so quiet and diverse, and we love that the houses are all so different," Pam says. "There are about 1,000 permanent residents."

One of those residents is architect Stephen Herlong. "He knows this island so well, and he knows what will fit in," Pam says. After their initial meeting, Herlong came back with a design requiring only minor tweaking. "They wanted it comfortable. They wanted to have four guest suites. And they wanted it to fit the island," he says.

The Van Scoys' layout, Herlong explains, "is large in terms of homes on Sullivan's Island, where there is a tradition of small summer cottages." So he reduced the home's perceived scale with a multiple-gable roof and cozy porches.

Inside, the casual cottage look includes a combination of narrow beaded board and tongue-and-groove pine paneling—placed to create a slightly hodgepodge impression of a home that grew with the family over decades. Floors throughout the home are random-width, 100-year-old heart pine boards salvaged from a plantation.

Although guests would never know it from the seamless flow of the finished decor, a trio of interior designers worked on the project. The first, Bitsy Schwabe, is a family friend living in West Virginia. The second is Laura Boyle, who lives close by and completed the bulk of the work. The third is the Van Scoys' daughter, Sarah, who recently earned her interior design degree.

With the advantage of knowing Pam's and Doug's personalities, Sarah could offer inside advice. Together the designers deftly married comfortable and classic new furnishings with the family's sentimental favorites from their Atlanta residence. "We spent over 20 years in that house," Sarah says. "So using that furniture really makes this house feel like home."

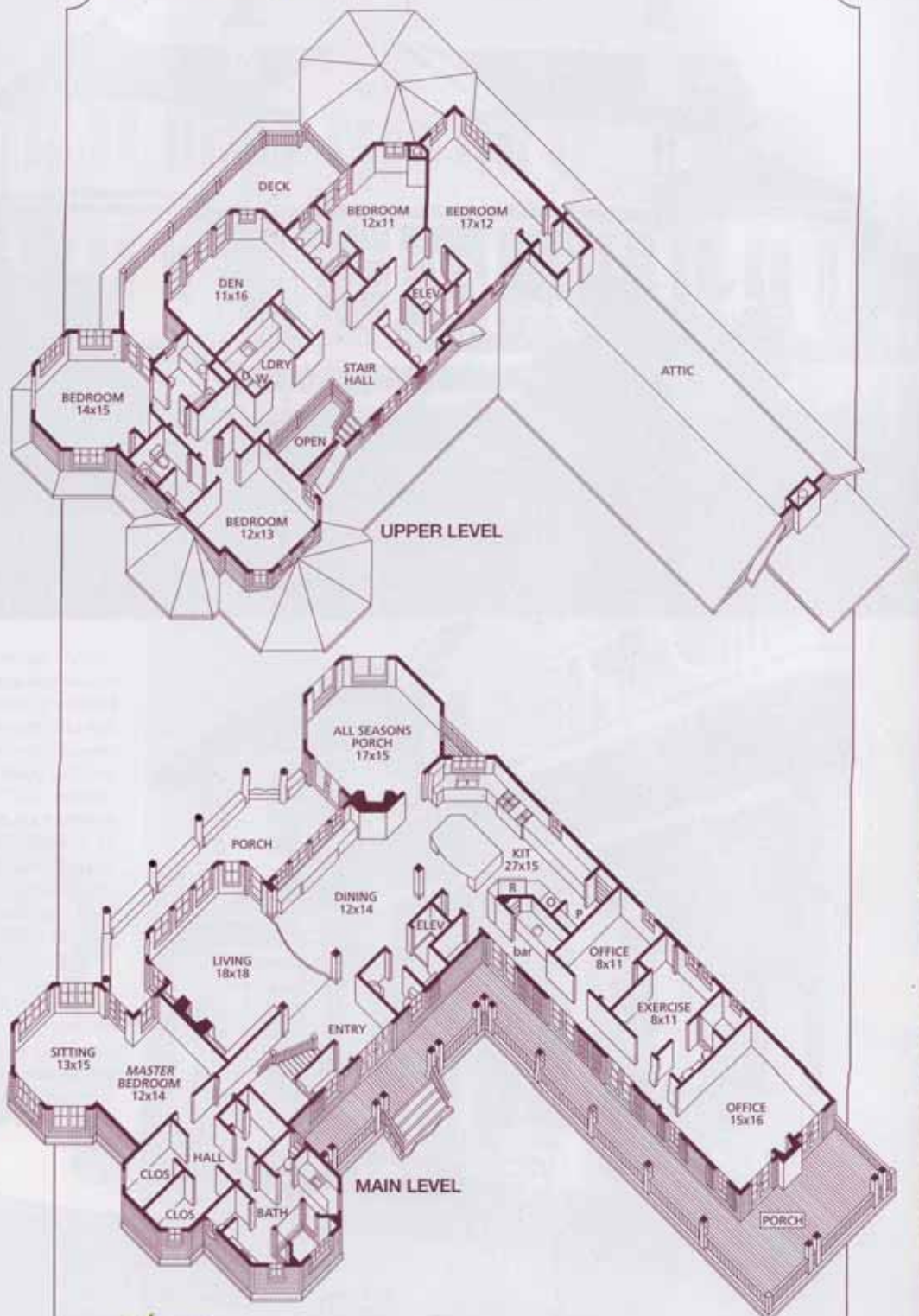
*Resources on page 158*



THIS PHOTO: Custom cabinets, granite countertops, and a restaurant-style range are not just for show. Since retiring, Doug has taken on a new hobby: cooking. Distressed red chairs and barstools tie the kitchen in with the adjacent dining area.



# Floor plan



## space

TOTAL SQ. FT: **4,408**  
 BEDROOMS: **5**  
 BATHROOMS: **5 full, 2 half**







ABOVE: Generous square footage provides for breezy public spaces that offer stunning harbor views on the main level and four guest suites upstairs. LEFT: Architectural details, such as a varied-shape roofline, deep porches, and octagonal bump-outs, help the house fit with the cottage character of Sullivan's Island, South Carolina. RIGHT: Pam and Doug had the porch's table and stowaway wedge-shape stools custom-made after borrowing the idea from a friend with a similar piece.







THIS PHOTO: Sarah Van Scoy, the owners' daughter and a student of interior design at the time the house was under construction, pushed her parents to go with lively shades of green in the master bedroom.





Meld modern amenities amid traditional fixtures and finishes. The *master bath* features his-and-her vanities and a steam shower.

BELOW: The greens continue from the bedroom into the master bath. Muted marble countertops, white cabinets, and classic black and white floor tiles balance the look. "Her" vanity features a makeup center purposely lit by natural and lamp lighting.

